

Available T80 Packages

4" Package



3" to 6" Package

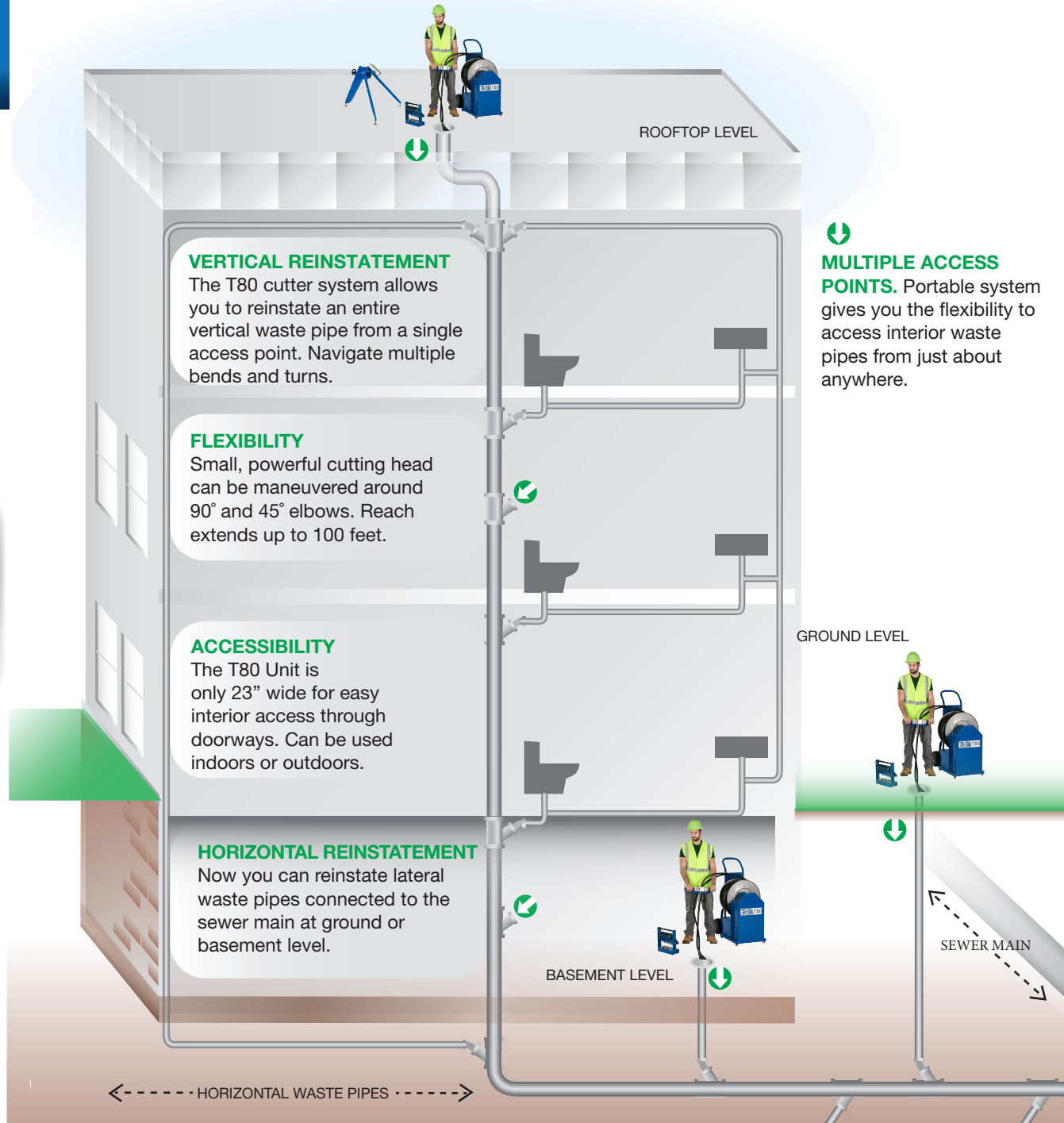


Complete 3" to 6" Package



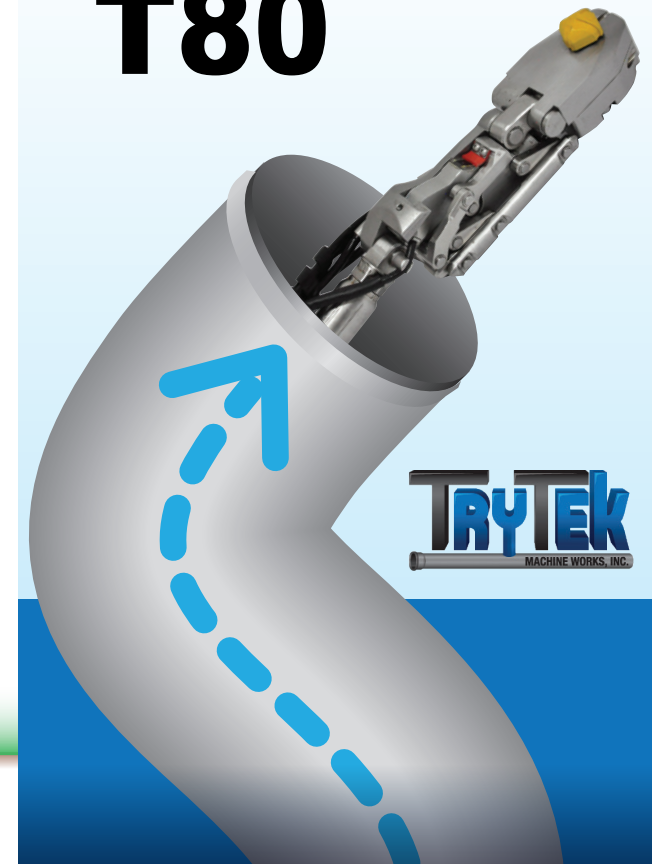
Reinstate lateral connections to an entire vertical or horizontal waste pipe from a single access point.

Increase opportunities, productivity, and profitability!



Goes where no other
**REINSTATEMENT
CUTTER** can go!

T80



Navigate 3" to 6" pipe
around 90° elbows!

Mainline Cutter T160



- Cutter system operates in 6" to 15" lined pipe
- 24 Volt operation-operates with 5 conductors
- Overall length with ram retracted-33.5" (850 mm)
- Overall length with ram extended-41" (1040 mm)
- Ram travel - 7.25" (190 mm)
- In & Out head travel - 1.88" (48 mm); 2.69" (68 mm); 4" (100 mm)
- Rotation - 360 degree
- Construction- Stainless steel and bronze

Air Routers

- .6 HP Square or Round
- .9 HP Square or Round
- .6 HP Front Facing
- .9 HP Round Gear Reduction
- .6 HP Right Angle



Inversion Units

TRY TEK's EZ1 or EZ2 controlled water pressure inversion unit is designed to install pipe liner in the Cured-In-Place-Pipe (CIPP) method of rehabilitating pipe.

- Invert with air, water, or both
- Low profile - no need for high scaffolds or lift trucks
- Utilizes public water from hydrants
- Monitor and control the inverting and curing process
- Inverts CIPP liner from 6" (150 mm) to 18" (460 mm)
- Bolt on boots for 6", 8", 10", 12", 15", and 18"
- Round pressure chamber
- Roller and Capstan - assist in controlling tube insertion
- Platform scaffolding included
- EZ1 – cures with water only
- EZ2 – cures with water or steam
- Inverts lengths over 1,000 Ft. with water
- Optional liner lubrication system



Over 30 years of excellence!

250 N. Main St.
Jacobus, PA 17407
www.trytek.com
trytek@trytek.com

EZ1 & EZ2



Mainline Cutter T150



- Cutting system operates in 5" to 18" lined pipe
- Clamshell design for easy maintenance
- Sealed, modular motor pod for durability
- Precise, variable speed positioning for fast, accurate cutting
- Centered head for negotiating offsets and obstacles
- Panel-mount PC-based controller leaves desk clear
- Standard game controller for familiarity
- 2-wire digital control for additional function expansion
- Clutchless electronic limiter for motor protection
- Tri-skid to eliminate down time from flipping

